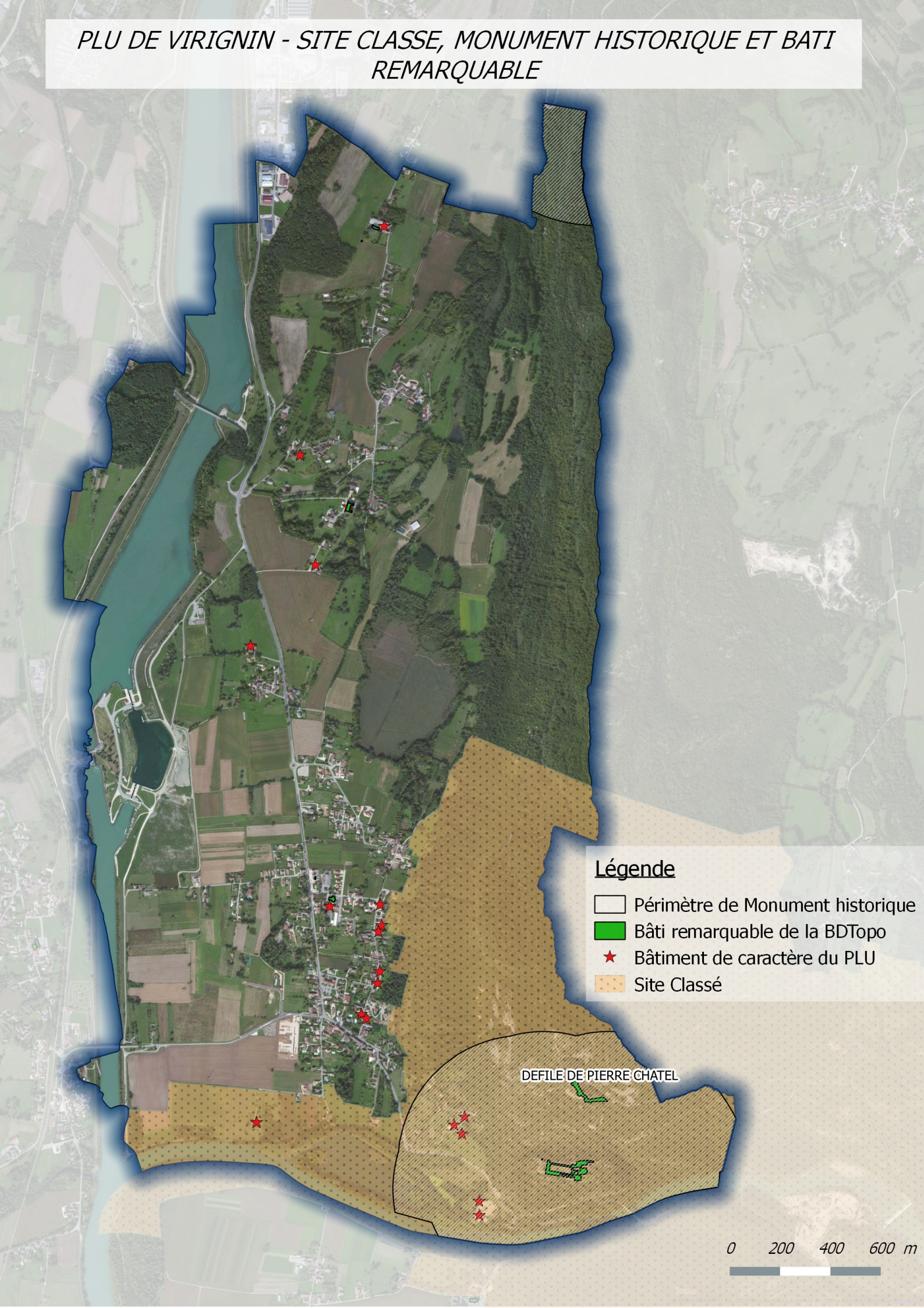






PLU DE VIRIGNIN - SITE CLASSE, MONUMENT HISTORIQUE ET BATI REMARQUABLE



Légende

-  Périmètre de Monument historique
-  Bâti remarquable de la BDTopo
-  Bâtiment de caractère du PLU
-  Site Classé

DEFILE DE PIERRE CHATEL

0 200 400 600 m